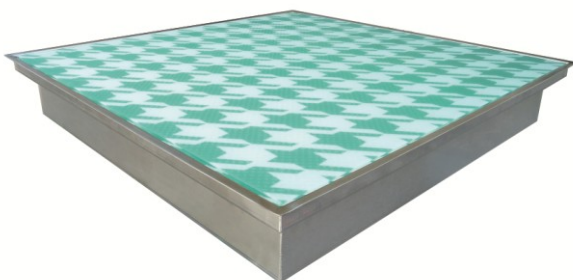
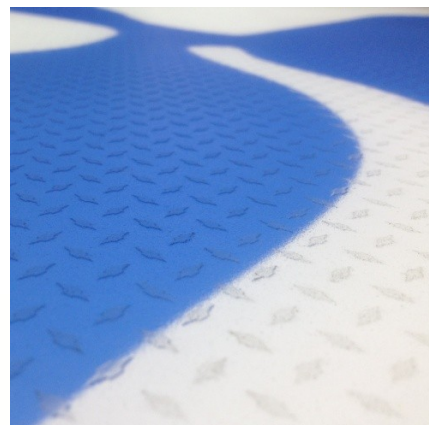


GENERAL CHARACTERISTICS

DivineGlass® Decor Light

Recessed and ready to install in all types of outdoor floors : wood, paving, paving , concrete, resin ... or in a lawn.

For private or publics projects.



Non-slip
R12 (selon DIN 51130) - Classe C (selon DIN 51097)
No risk, barefoot poolside and compliant exterior stairs



Resistance to impact / scratch
Tri- laminated glass and tempered Securit - 28 or 32 mm thick



Easy cleaning



Resistance to UV/ to weather
method for bonding of glass slabs with moisture protection, UV and yellowing

Learn more about the unit casing and its lighting system :

- stainless steel unit casing 304 L
- EPDM bands joints and and neutral elastomer silicone special glass
- waterproof LED, economic and durable - 35 000 h – up to 3 500 Lumens/m² (according to printed visual)
- waterproof transformer driver leds - class 2
- special light diffusing film for backlight
- thickness of lighting module : from 10 to 13.5 cm
- size of lighting surface : from 0.36 m² (ex. : 60 x 60 cm) to 1.44 m² (ex. : 120 x 120 cm)
- Weight of a module : 95 kg/m²